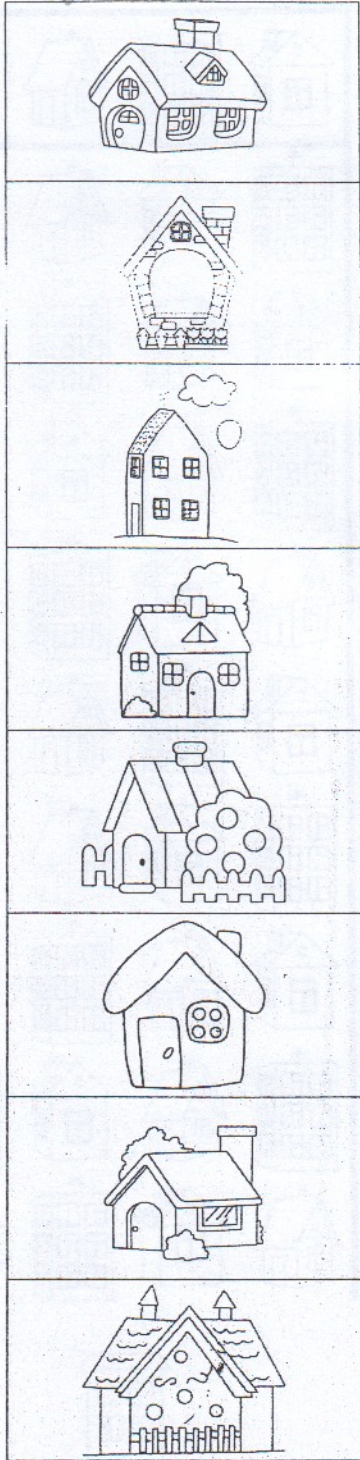
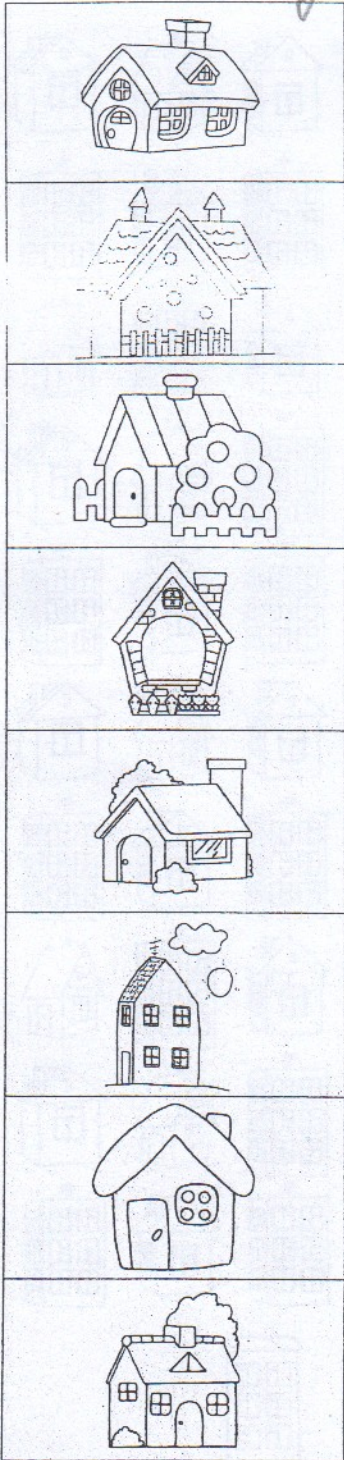
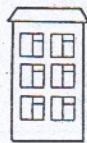
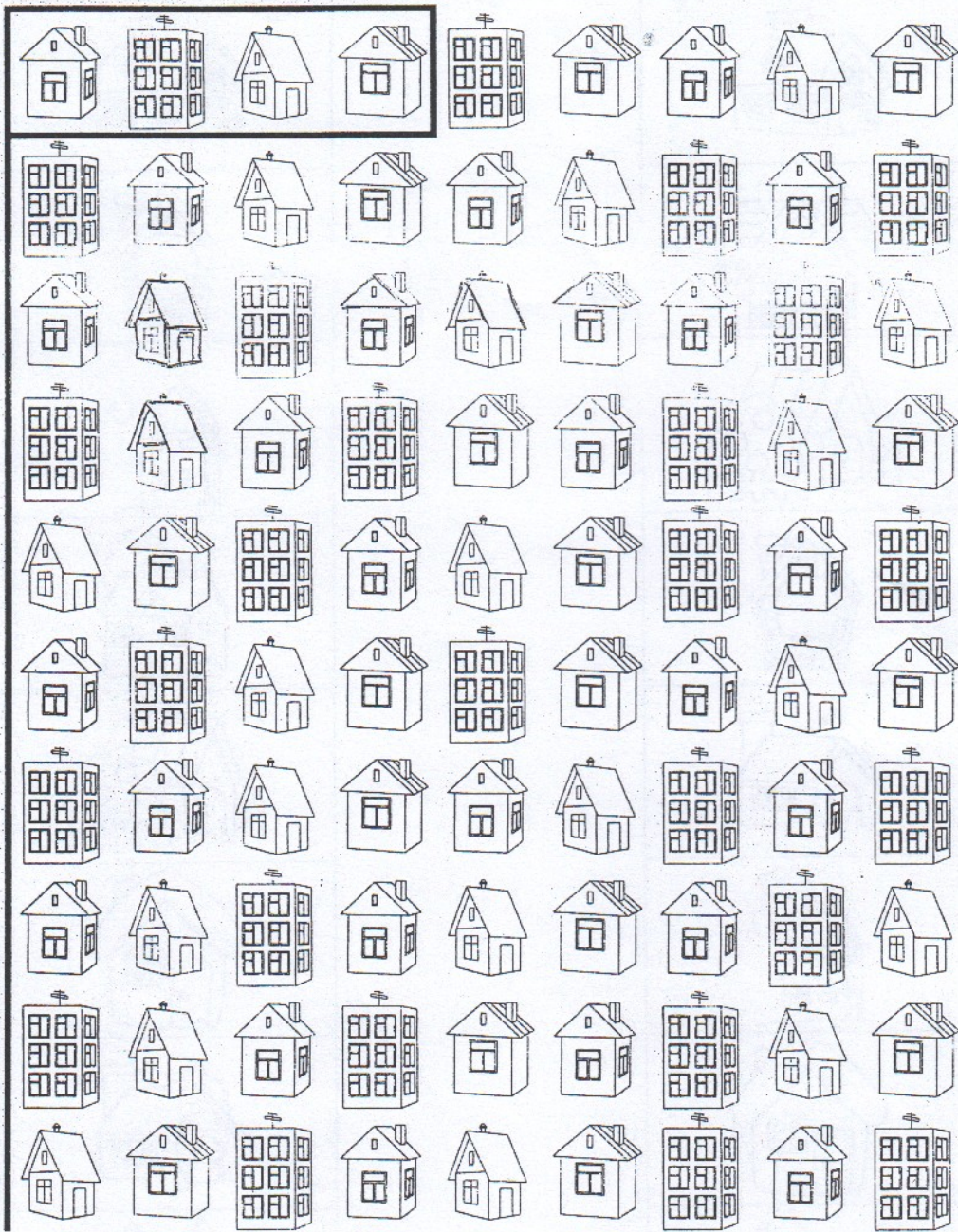


Соединить фигурки домика





b i

Handwritten cursive practice for the letters 'b' and 'i'. The letters are formed within a rectangular frame. The letter 'b' is on the left and 'i' is on the right. The practice consists of five rows of cursive loops. The first row shows the starting strokes for 'b' and 'i'. The second row shows the continuation of the loops. The third row shows the loops for 'b' and 'i' overlapping. The fourth row shows the loops for 'b' and 'i' overlapping. The fifth row shows the loops for 'b' and 'i' overlapping.